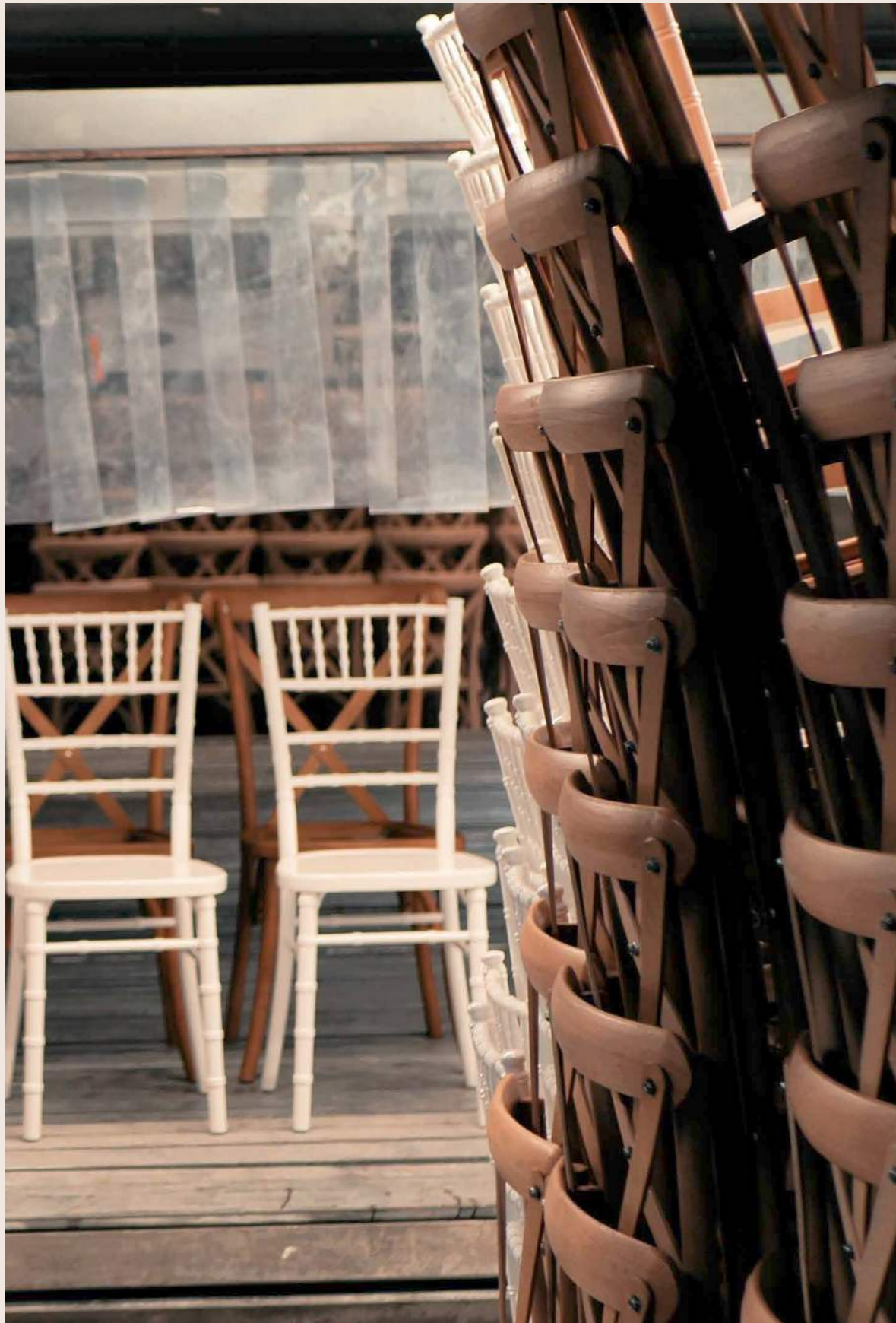




Rosetone

EVENT FURNITURE



OUR JOURNEY

Rosetone began in 1987 with a simple vision: to bring quality and style to furniture. Founded by Rosemary and Tony Goodley, the business quickly grew into a trusted name within the industry. With a reputation built on craftsmanship, attention to detail, and a personal approach, Since then we have become synonymous with reliability and style.

As we grew, so too did the family's involvement. In 2007, their daughter Michelle and her partner Andy joined the business, helping to strengthen operations and continue its steady growth. By 2009, Rosetone had outgrown its original base and moved to larger premises in Shefford, Bedfordshire, where craftsmanship and customer care remain at the core of everything we do.

In 2021, the third generation took on the responsibility of leading the business. Michelle's son Warren, supported by Jordan & Lewis, now guides Rosetone into the future. Under Warren's leadership, the company has broadened its range into contract furniture for hotels, pubs, bars, and restaurants, supplying everything from dining chairs and tables to bespoke banquette seating and lounge pieces. Today, We proudly serves our loyal client base across the hospitality and leisure sectors.

Looking ahead, Rosetone remains committed to its legacy of quality, service, and innovation. We are expanding our collection, refining our processes, and investing in sustainable practices to ensure we continue to meet the needs of the next generation of clients.

From humble beginnings to becoming a trusted name in furniture, our story has always been shaped by family values, craftsmanship, and a personal touch. And as we grow, those principles will remain at the heart of our business.



CHIAVARI

STANDARD LIMEWASH



One of our most popular chairs. Finished in limewash and including a premium Lissy Natural fabric seat pad as standard, although you can upgrade the fabric.

PREMIUM CHIAVARI



The Premium Chiavari Chairs are finished in the UK here at our Bedfordshire factory, these are made from wood. The chairs are sprayed to order in a variety of finishes and include a Pimlico Premium Fabric Seat Pad available in a choice of colours.

CHIAVARI

DELUXE

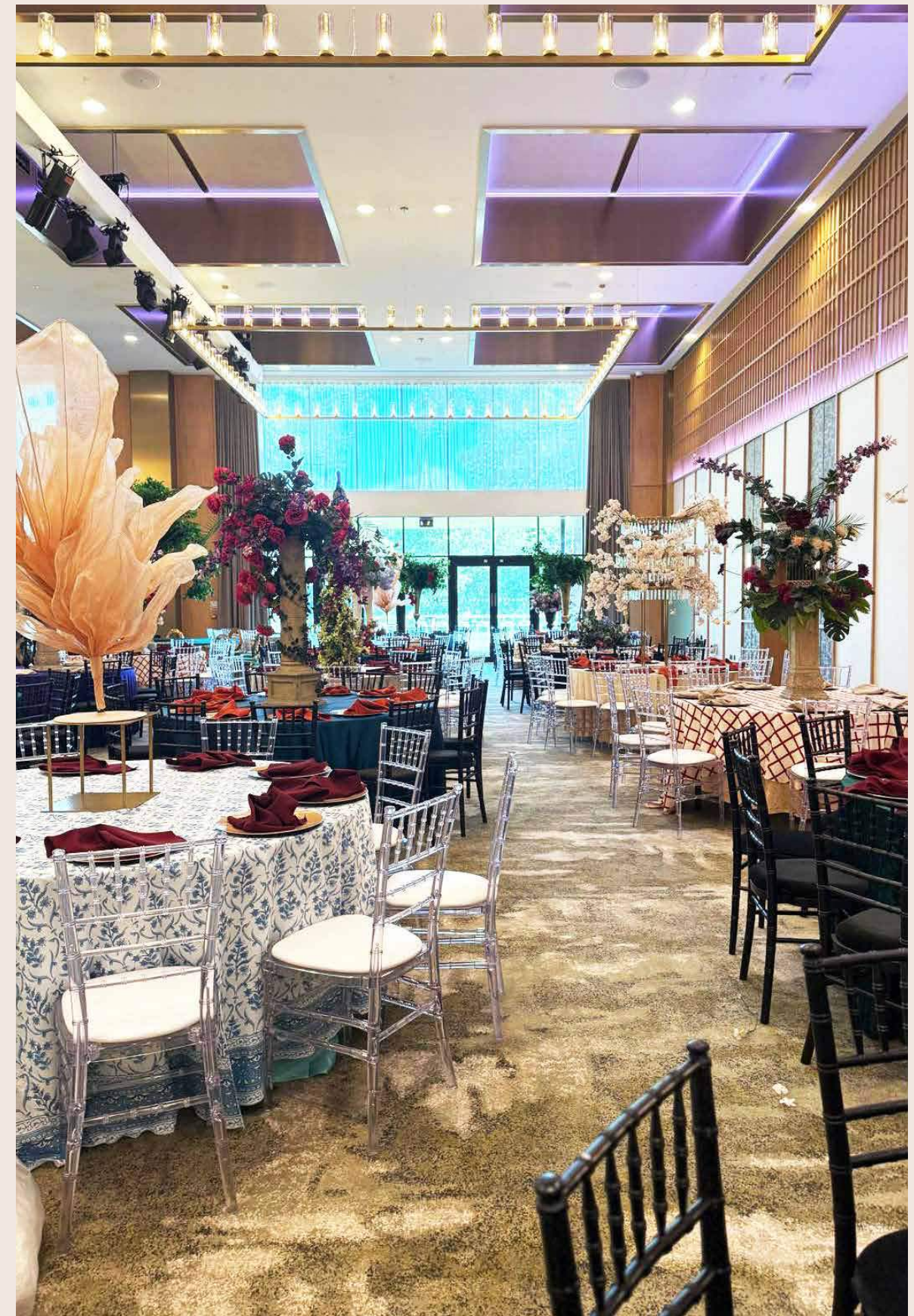


The Deluxe Chiavari Chairs are finished in the UK at our Bedfordshire factory. Made from a superior European frame, they are sprayed to order in a variety of wood finishes and include a Pimlico Premium Fabric seat pad in a range of colours ideal for 4* and 5* hotels.

ICE



Our Premium Quality Ice Chiavari Chair is made from high-grade, crystal-clear polycarbonate.



LIMEWASH & WHITE LOUIS CHAIR

LIMEWASH LOUIS RATTAN



Limewash wood finish:
Low-maintenance resin
with an Ivory Hessian
back and seat pad, which
can be reupholstered in
any fabric of your choice.



The Limewash, White & Rattan Louis Chair will add a touch of sophistication and style to any venue and event. The finish gives it a clean and elegant appearance, making it a popular choice for various interior design styles, including traditional, French country, and shabby chic.

The Louis chair is characterised by its curvaceous silhouette, and a rounded backrest

Italian Fabrics: Upholstered with luxurious Italian fabrics, choose from hundreds of options to suit your style and decor.

Stackable: These chairs are stackable, offering convenience for storage and transport.

LIMEWASH & WHITE LOUIS CHAIR

LIMEWASH LOUIS UPHOLSTERED BACK



Limewash wood finish:
durable, lightweight,
and water proof

Ivory Hessian seat
and back.

WHITE LOUIS



Strong resin, durable
and low-maintenance,
featuring a white faux
leather seat and back pad.

CROSSBACK

DARK OAK



Oak wood with a dark stain applied, available with a fixed rattan seat pad or a range of Pimlico fabrics (see page 30)

CROSSBACK

LIGHT OAK



Oak wood with clear lacquered, available with a fixed rattan seat pad or a range of Pimlico fabrics (see page 30)

LISA



Beech wood with finished in Tipi Brown Stain, Stackable 10 high. available with a fixed rattan seat pad or a range of Pimlico fabrics (see page 30)

BESPOKE



Oak wood with finished in your colour of choice, available with a fixed rattan seat pad or a range of Pimlico fabrics (see page 30)

MALONE

MALONE CHAIR BLACK PAD



Gold metal chair with intersecting geometric backrest, slim legs, and a black cushioned seat, exuding modern luxury sophistication.

MALONE CHAIR WHITE PAD



Gold metal chair with intersecting geometric backrest, slim legs, and a white cushioned seat, exuding modern luxury sophistication.

DIOR

GOLD DIOR WHITE PAD



Our Dior Chairs are a luxury chair that would look stunning in any type of venue. They have comfortable, thick, glossy faux leather pad for design and comfort, and they have thick sturdy gold legs. These are popular for wedding receptions and ceremonies.



WENDY BENTWOOD CHAIR



Sleek and timeless design in a (deep black finish) solid beech wood frame available in a wide number of frame & seat pad finishes.

ELIZA CHAIR

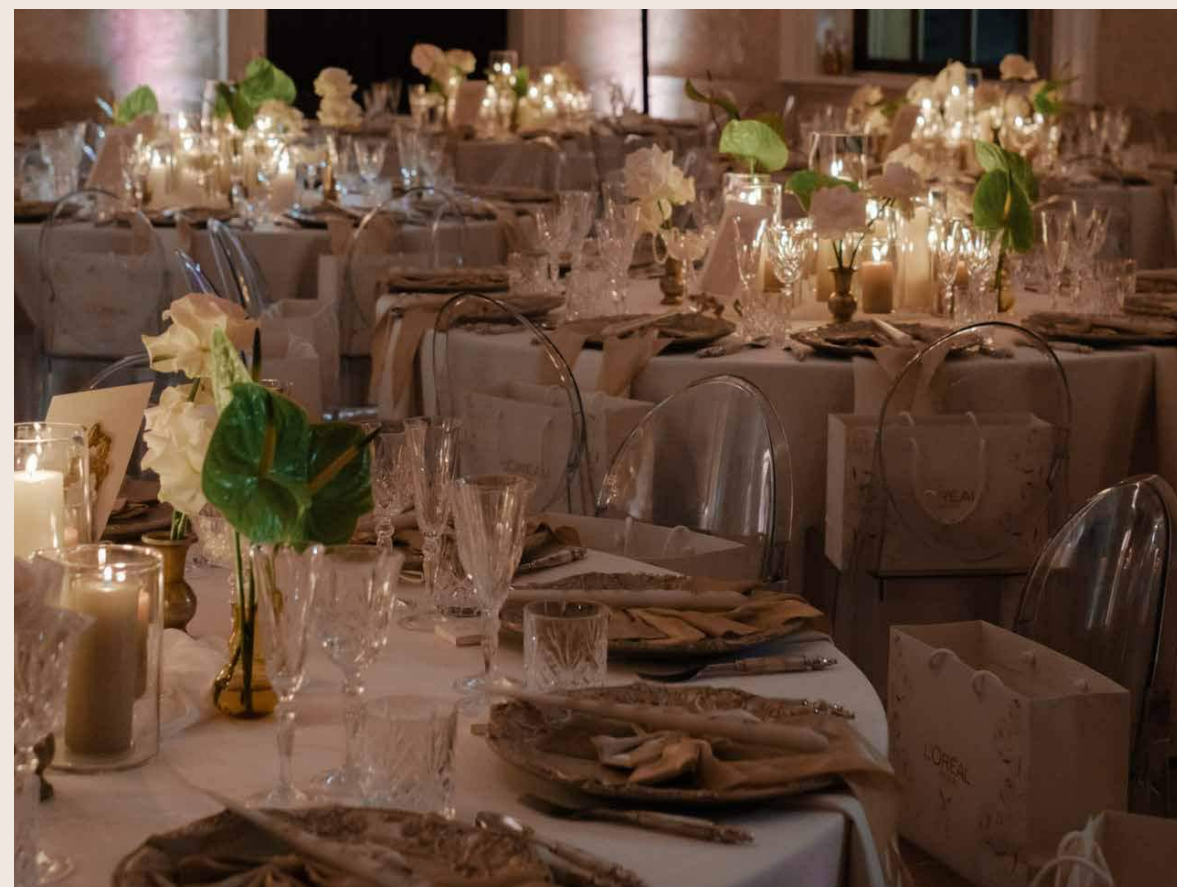


Resin wood effect with curved frame, cushioned seat available in a range of fabrics (see page 30)

GHOST VICTORIA



Comfortable, Modern, and Stylish: Combines comfort with contemporary style, enhancing the aesthetic appeal of your space.



LILLIAN CHAIR BLACK



Resin black frame, rattan back and cushioned seat

LILLIAN CHAIR WALNUT



Resin walnut frame, rattan back and cushioned seat available in a range of fabrics (see page 30)

SUSIE CHAIR



Resin wood effect frame, rattan back and cushioned seat available in a range of fabrics (see page 30)

WEAVE CROSSBACK



Resin walnut frame, weave back and cushioned seat available in a range of fabrics (see page 30)

FOLDING CHAIRS

RUSTIC FOLDING CHAIR



Beech wood stained in Tipi Brown

Foldable with interlocking grooves.

WHITE FOLDING CHAIR



Foldable, easy to transport and store

Versatile – pairs well with any table

White resin, easy to wipe clean

Suitable for both indoor and outdoor use.





OUTDOOR

RUSTIC BENCH



Strong, solid pine wood

Foldable: Easy to transport and store

RUSTIC TABLE



Strong, solid pine wood

Foldable: Easy to transport and store

TABLES

TRESTLE TABLE



Rectangular wooden trestle table.

ROUND FOLDING TABLE



Round wooden folding table.

TABLES

RUSTIC ROUND FOLDING TABLE



Rustic round folding table.

POSEUR TABLES

CHROME POSEUR TABLE



Chrome top poseur removable into 3 pieces, easy to store and transport.

MARBLE POSEUR TABLE



Refined gold stand:
High-quality marble top
Versatile and resilient
Different heights available with different tops to suit any design.

BARSTOOLS

LEATHER BAR STOOL



Choose from a number of designs - made to order in any wood finish or fabric including real leather.

RESPRAYS



At Rosetone, we combine craftsmanship with cutting-edge technology to deliver the highest quality chair resprays. For intricate detailing and bespoke finishes, our skilled team hand-resprays each chair with precision and care.

For large-scale projects, we utilise our in-house robotic respray system - one of the few in the industry - which allows us to spray chairs in volume while maintaining a consistent, flawless finish. This unique capability enables us to meet tight deadlines and our clients' needs for major events.

Every chair is mechanically sanded to remove old paint and imperfections before being resprayed in any colour of your choice and finished with a durable lacquer coating. This service is ideal for chairs used frequently and transported between venues, ensuring they always look their best, event after event.



STEP 1

Send images of your chairs along with quantities and the colour we will then discuss with production the level of service required.

STEP 2

We send back a price within 12 hours, listing the level of service recommended and work to be carried out also discuss dates when they are available, they will then be added onto our production programme.

STEP 3

We collect your chairs in one of our dedicated vehicles and loan you free of charge chairs from our hire stock.

Every chair is counted in and checked for any loose joints that need glueing or tightening before they are ready for spraying.

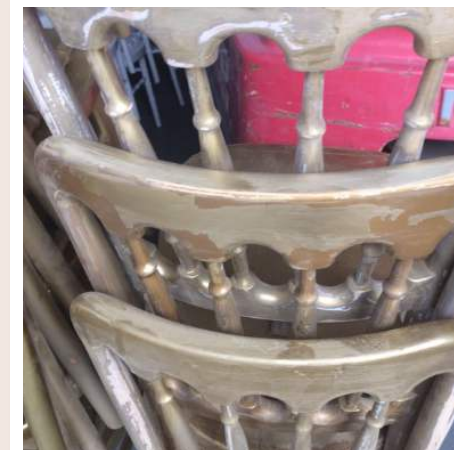
STEP 4

We refurbish your chairs to the level of service pre-agreed and fix any broken chairs with our state-of-the-art robotic spray systems. Once we are happy with the finish we will confirm a collection or delivery date back to you.

STEP 5

We'll deliver your chairs back and collect any Hire chairs you may have borrowed at the same time.

RESPRAYS



BEFORE

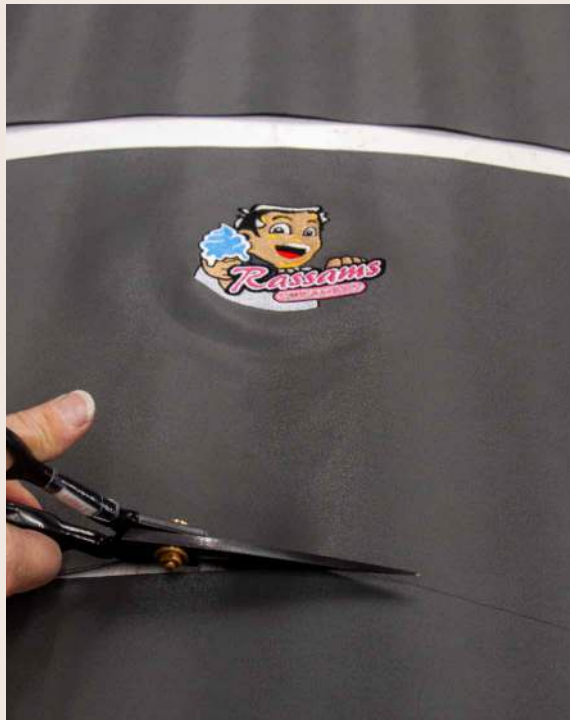


AFTER

BESPOKE

Our dedicated in-house upholstery team and workshop specialise in designing and creating bespoke furniture for events of all styles and scales.

Whether it's a one-off statement item or a full collection, we take pride custom-made furniture that adds a touch of individuality to your event space.



RE-UPHOLSTER



We understand that budgets don't always allow for new pieces of furniture so we offer a re-upholstery service where we can change the fabric on your existing pieces of furniture.



SEAT PADS

Our team of upholsterers can personalise your seat pad in any colour or fabric of your choice to match the theme or branding of your event.

PIMLICO FABRICS

General purpose chenille/velvet crush plain fabric suitable for most designs of upholstered furniture. comes in almost 100 different colours



NOTTING HILL FABRICS

100s of colours to suit your needs - General purpose fabric suitable for most designs of upholstered furniture.

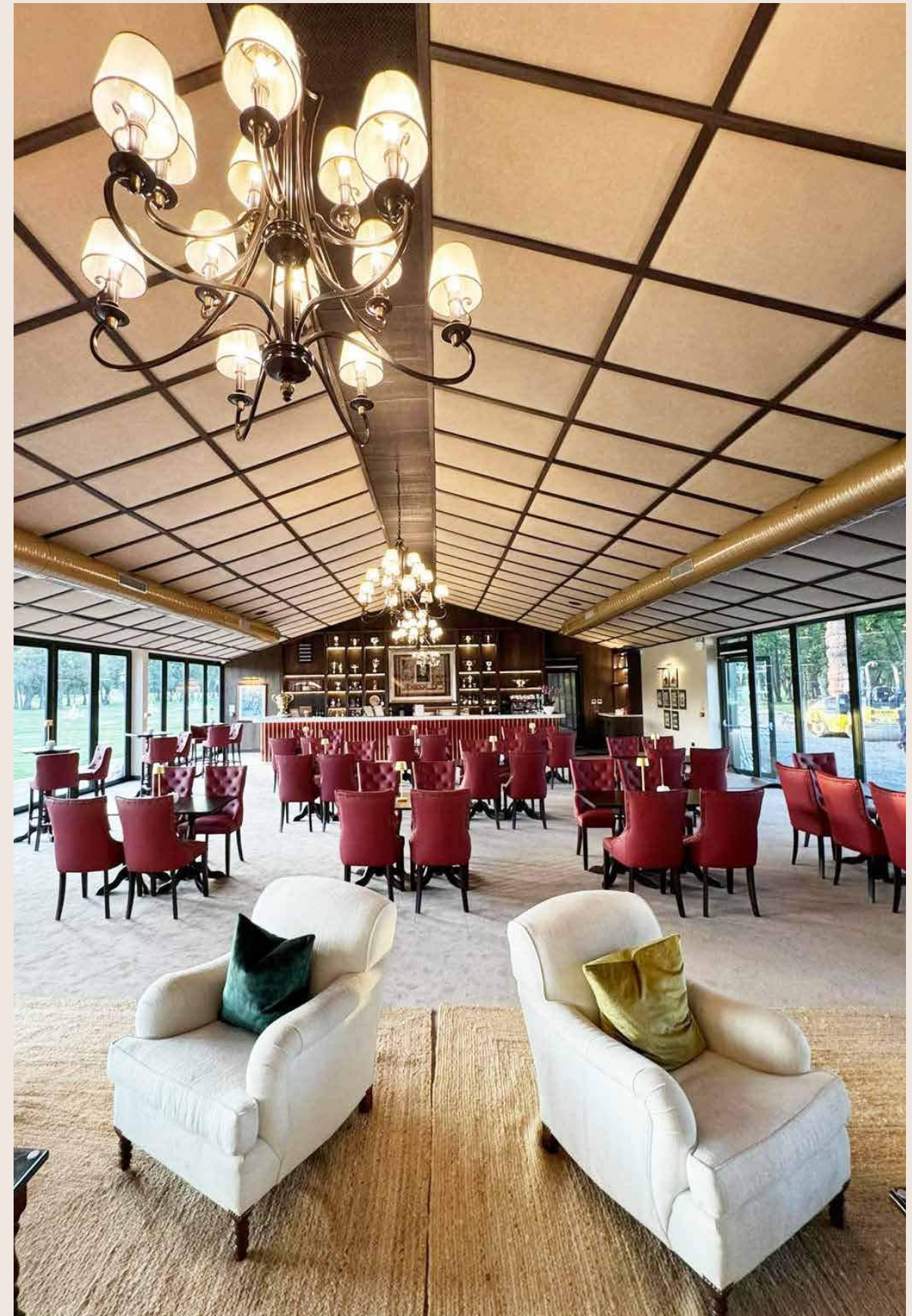


CHRISTINA MARRONE FAUX LEATHER

Contract, Domestic, Healthcare and Outdoor use in all different colours.



We have thousands of fabrics available in a wide range of colours plain and patterned. If none of these options work for you, please let us know.





www.rosetone.co.uk

01462 811 166 | info@rosetone.co.uk

UNITS 1-3 WREN PARK BUSINESS CENTRE | HITCHIN ROAD | SHEFFORD | BEDS | SG17 5JD